













PROJECTS IN PROGRESS

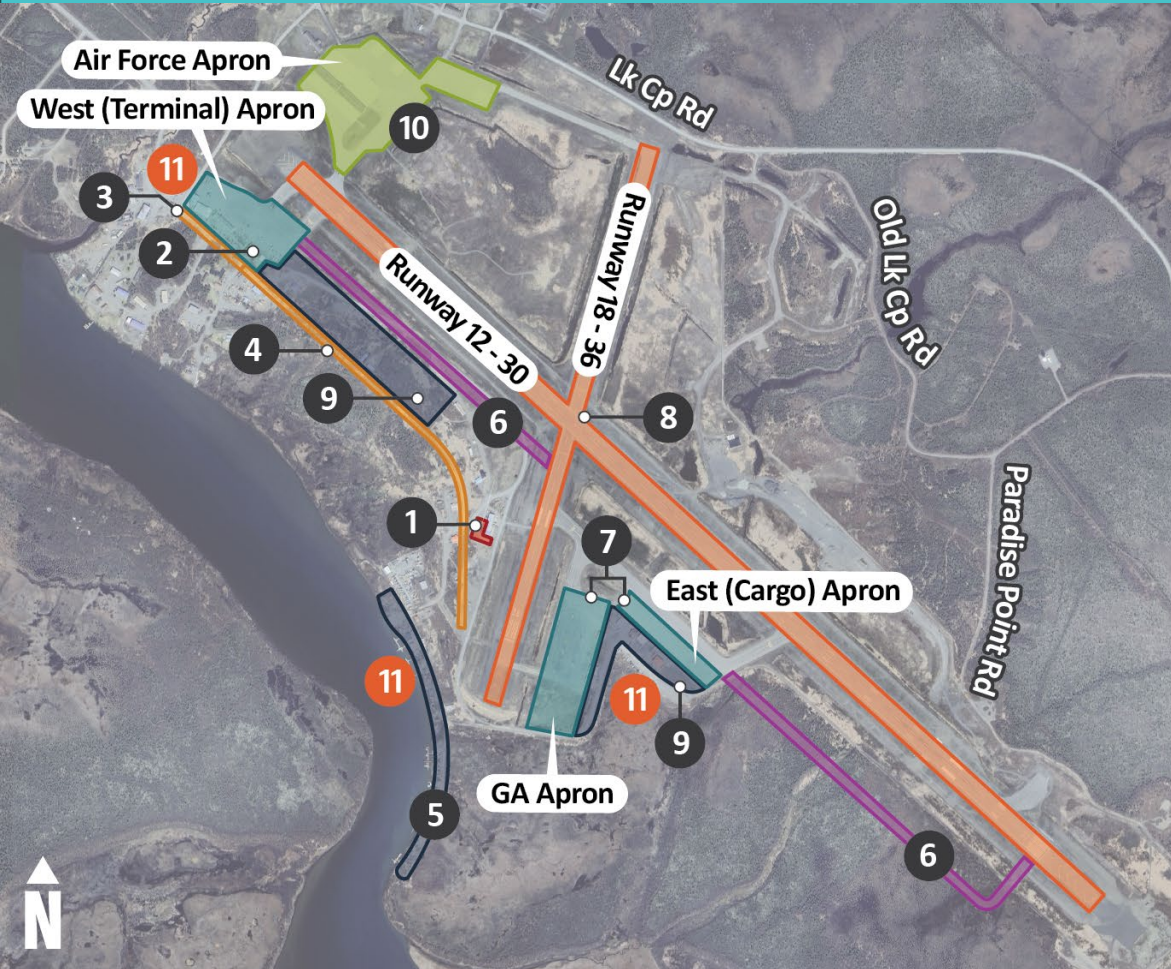


Design Projects Underway

- | | | | |
|--|--|--|--|
|  Airport Boundary |  Correct Aligned Taxiways on Runway 18-36 |  New 4-Bay SREB, Fence Alignment |  Repave Runway 18-36 |
|  Waterlane |  Replace Lighting for Runway 18-36 and 12-30 |  Replace Terminal, GA, and Transient Apron Lighting |  Run Underground Power Line from ARFF Building to Emergency Generator |
| |  Replace Primary Lighted Wind Cone for Runway 12-30 |  Rehab GA and Terminal Aprons | |
|  Fencing and Gate Security Improvements | |  Rehab Taxiways A, D, G, and West Section of C | |



KEY ISSUES



- | | | |
|---|---|--|
|  Roads & Parking |  M&O |  Lease Lots |
|  Runway |  Taxiway |  Apron |
| | |  Air Force |

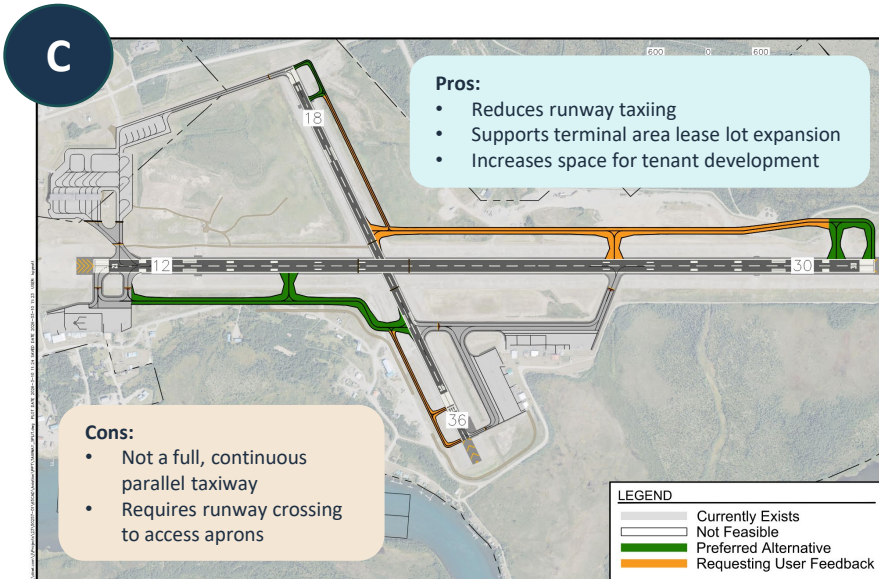
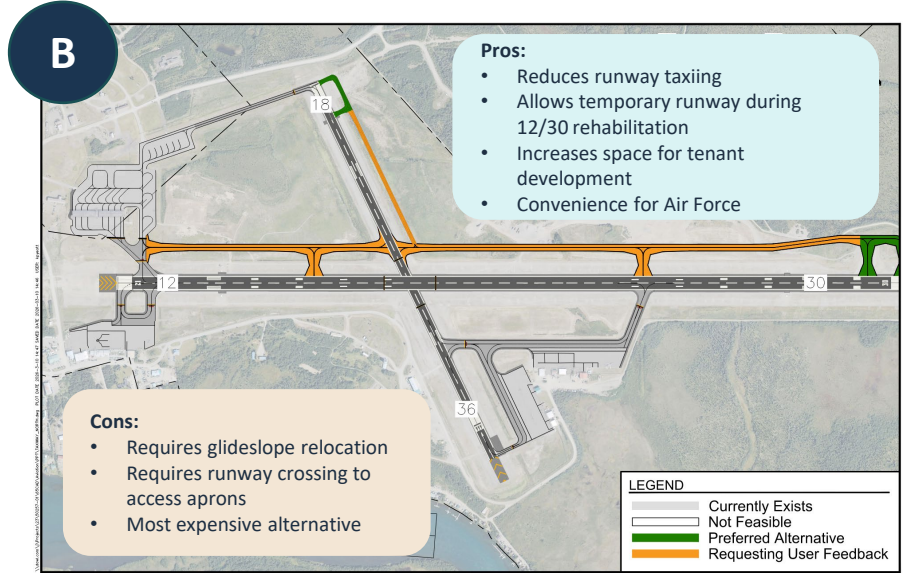
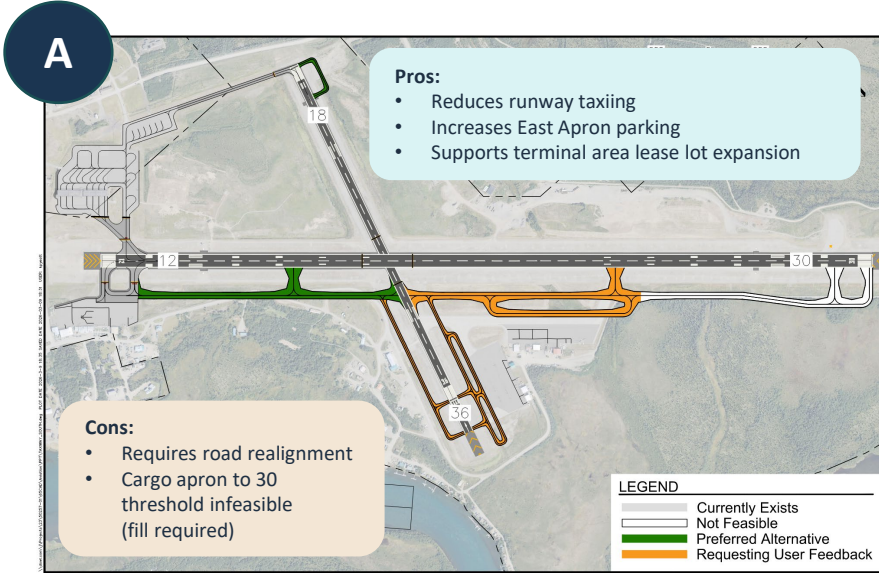
- 1 New Snow Removal Equipment Building with Relocated Fence
- 2 Terminal(s)/Terminal Apron Expansion and Reconfiguration
- 3 Terminal Curbside and Vehicle Parking
- 4 Relocation of Main Street for Parallel Taxiway and Lease Lot Development
- 5 Floatplane Base Roads/Drainage, Lease Lots, and Use Coordination
- 6 Parallel Taxiway
- 7 Apron Use and Configuration
- 8 Runway/Navaid Maintenance
- 9 Lease Lot Demand
- 10 Integrate Air Force into Plan

Previously Unlisted Issues Shared by Airport Users

- 11 Water/Sewer Utilites
- 12 Gravel Operating Area (Not Shown)
- 13 Boat/River Conflicts (Not Shown)



TAXIWAY OPTIONS

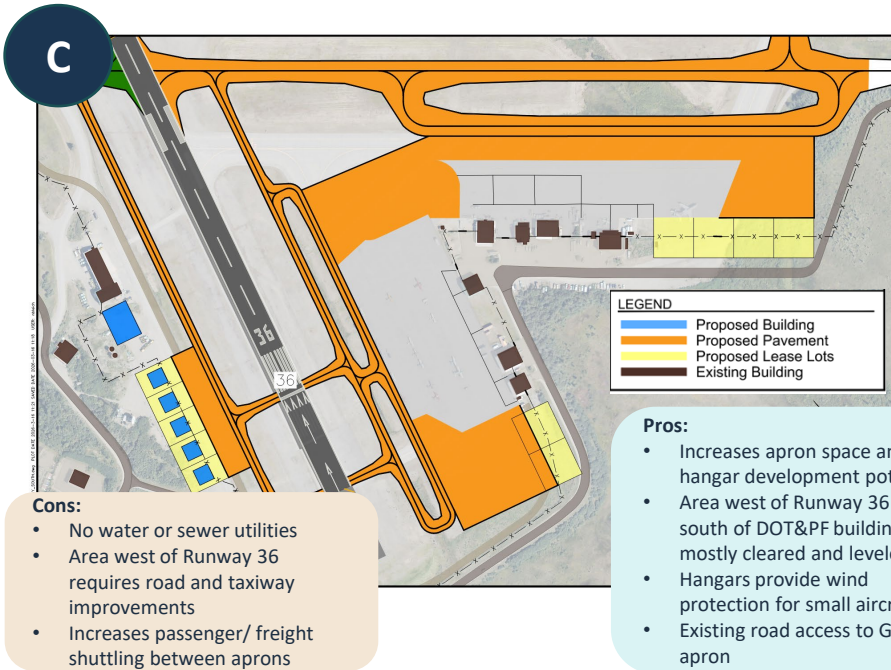
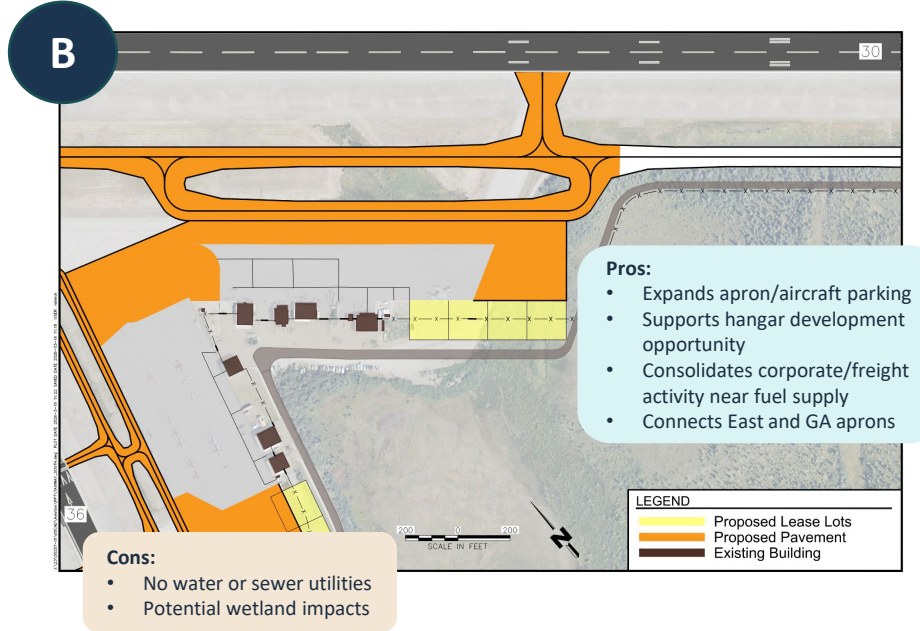
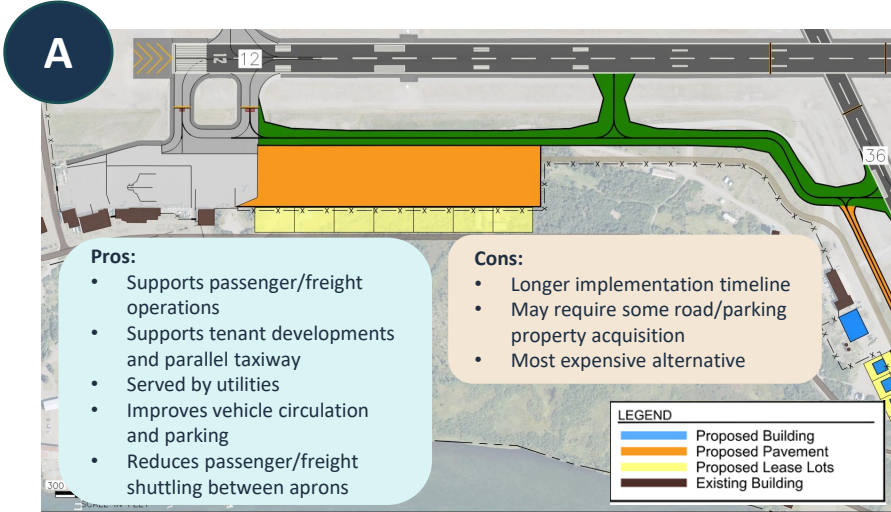


KEY:

A. Full Parallel – Southwest
B. Full Parallel – Northeast
C. Split Parallel



APRON EXPANSION PRIORITIES



KEY:

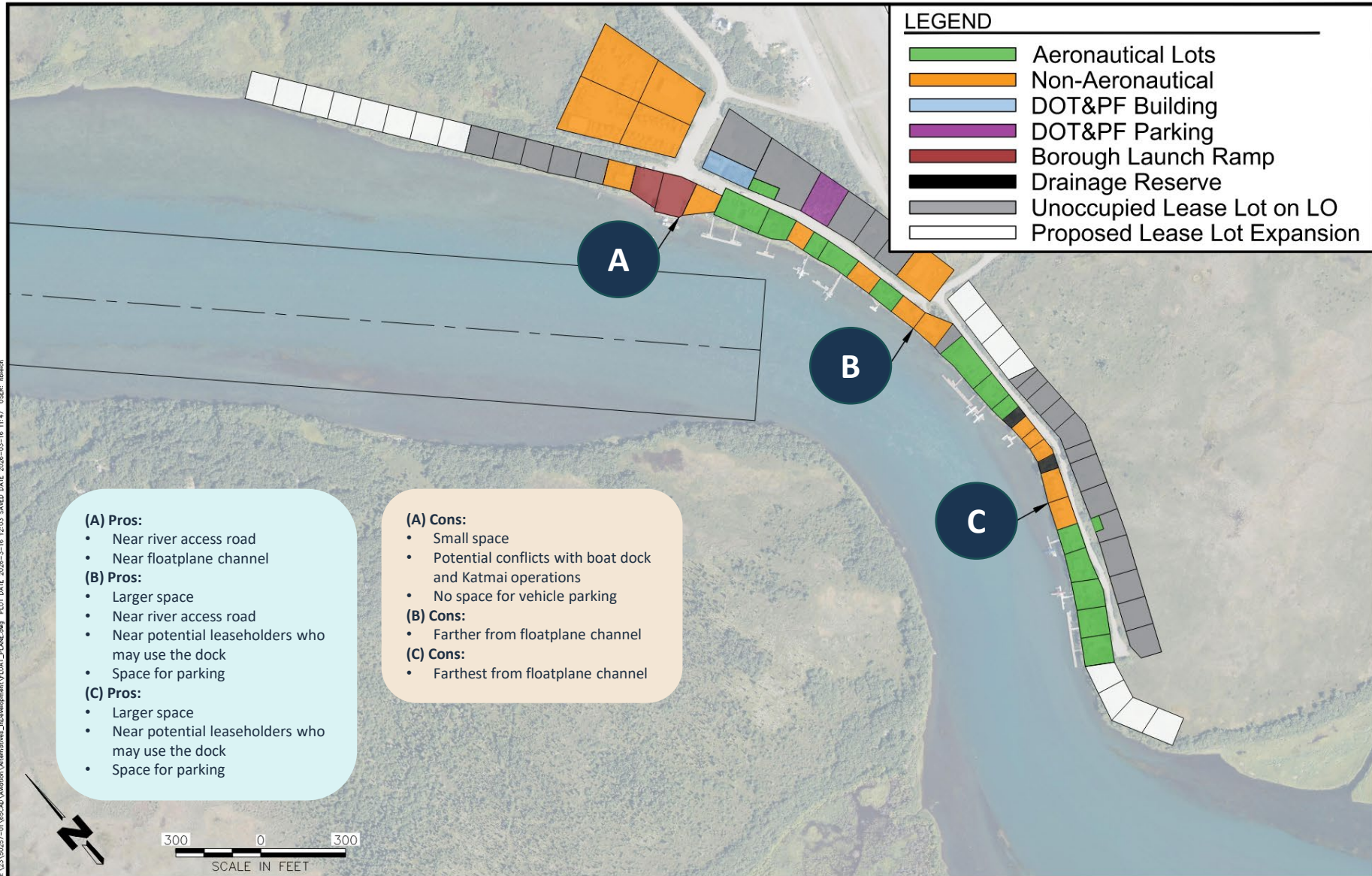
A. West Terminal Expansion & Road Relocation

B. East (Cargo) Apron Expansion

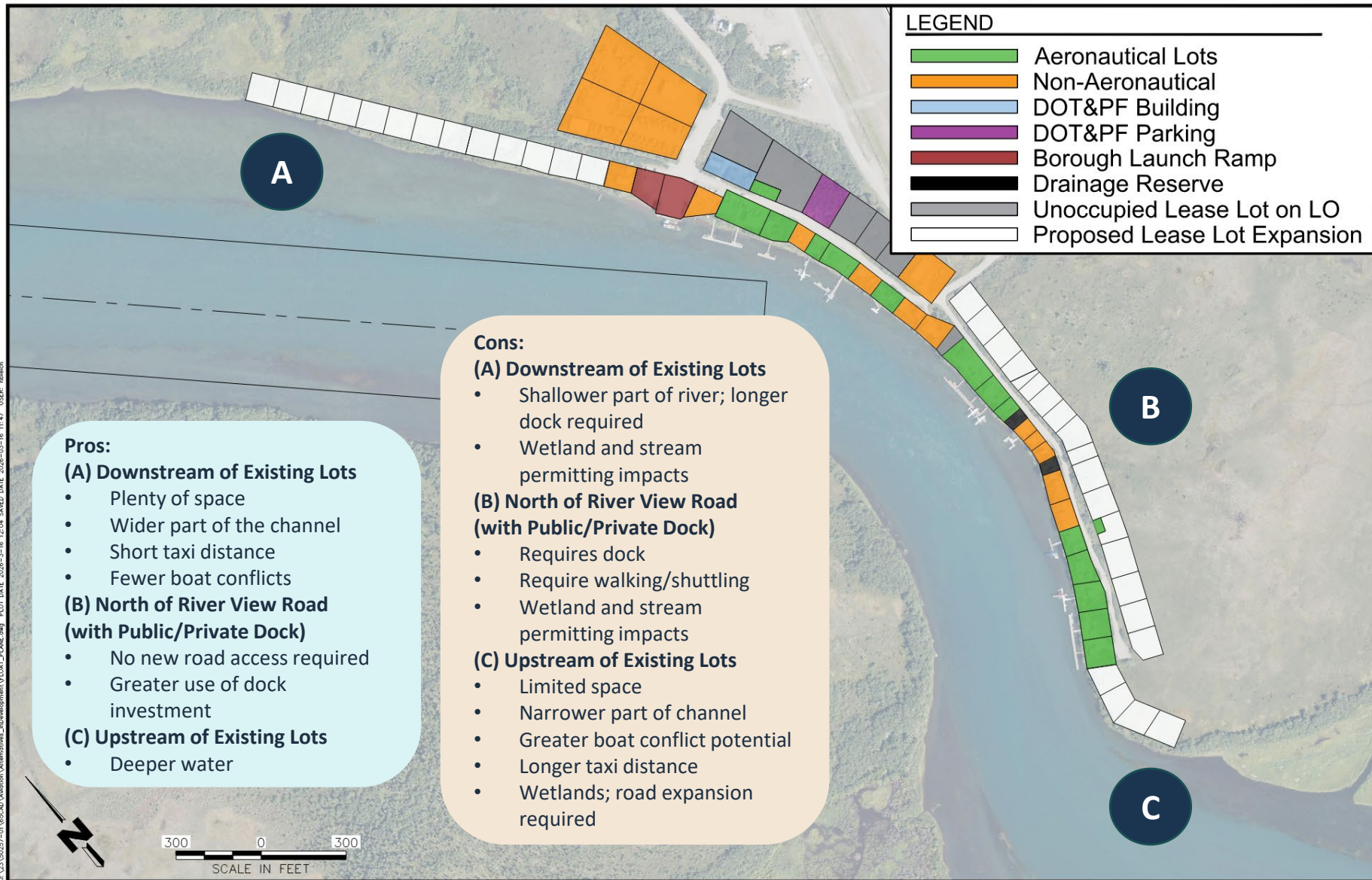
C. GA Apron & West of Runway 36



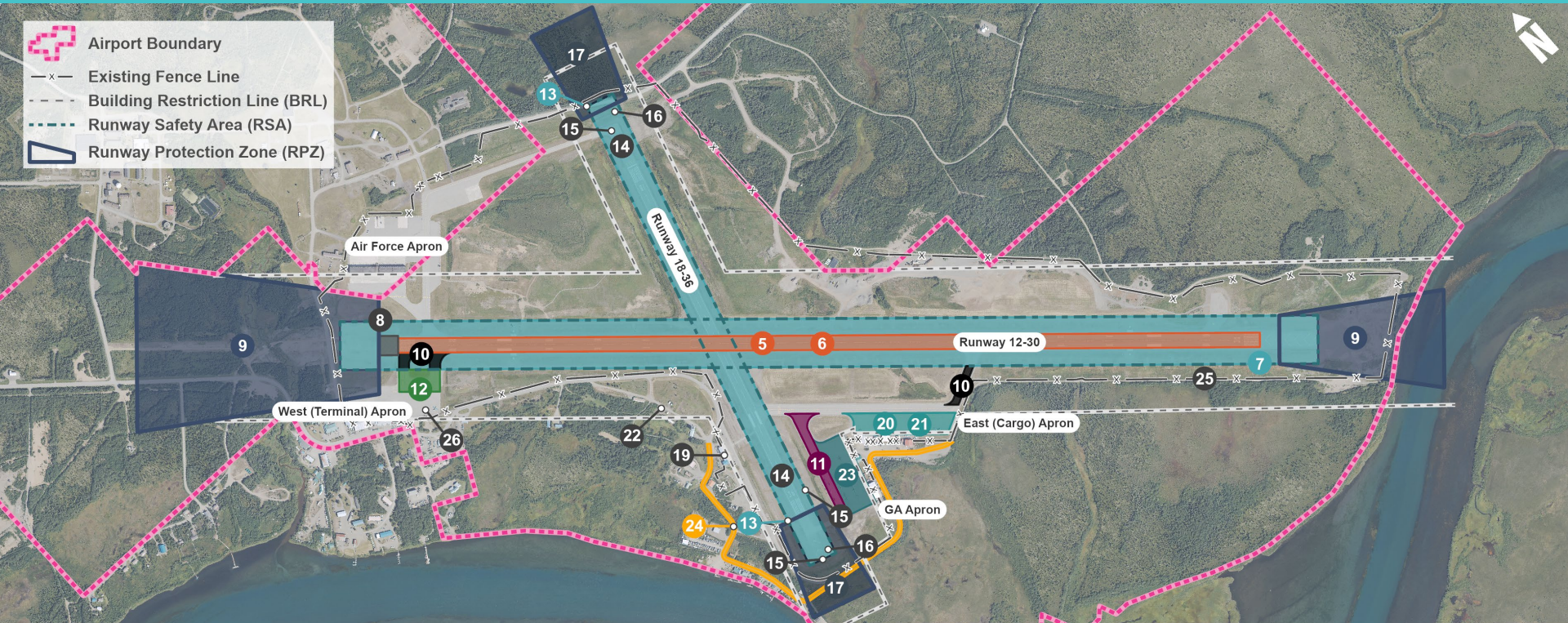
POTENTIAL PUBLIC FLOATPLANE DOCK LOCATIONS



POTENTIAL NEW FLOATPLANE LEASE LOTS



DESIGN STANDARDS & STATE OF GOOD REPAIR



Recommendations to Maintain Existing Infrastructure & Bring Airport to FAA Standards

- | | | | | |
|---|--|---|--|---|
| 1 Parallel Taxiway for Runway 12/30 (Not Shown) | 7 Retain RSA with Declared Distances | 12 Designate West Taxilane "Taxilane A" | 17 Evaluate & Address Runway 18/36 RPZs | 22 Evaluate Buildings within BRL |
| 2 Apron Expansion (Not Shown) | 8 Construct 200 ft x 200 ft Blast Pad on Runway 12 | 13 Construct 300 ft RSAs on Runway 18/36 Ends | 18 Airfield Drainage Improvements (Airfield-Wide, Not Shown) | 23 Designate Helicopter Parking Area |
| 3 Floatplane Area Improvements (Not Shown) | 9 Evaluate & Address Runway 12/30 RPZs | 14 Renumber Runway 18/36 to 1/19 in 2027-2029 Timeframe | 19 Transition from AFFF to F3 | 24 Improve Roads on Airport Property |
| 4 Unpaved Operating Area (Not Shown) | 10 Remove Direct Access from Aprons to Runways | 15 Install REIL & PAPI on Runway 18/36 | 20 Rehabilitate East (Cargo) Apron | 25 Develop Inside-the-Fence Perimeter Road |
| 5 Update Runway 12/30 RDC to D-III-2400 | 11 Connect Taxiways D and G | 16 Construct Blast Pads on Runway 18/36 | 21 Resolve Electrical Issues on East (Cargo) Apron | 26 Electrical Charging Station (for Aircraft) |
| 6 Rehabilitate Runway 12/30 Surface | | | | |

